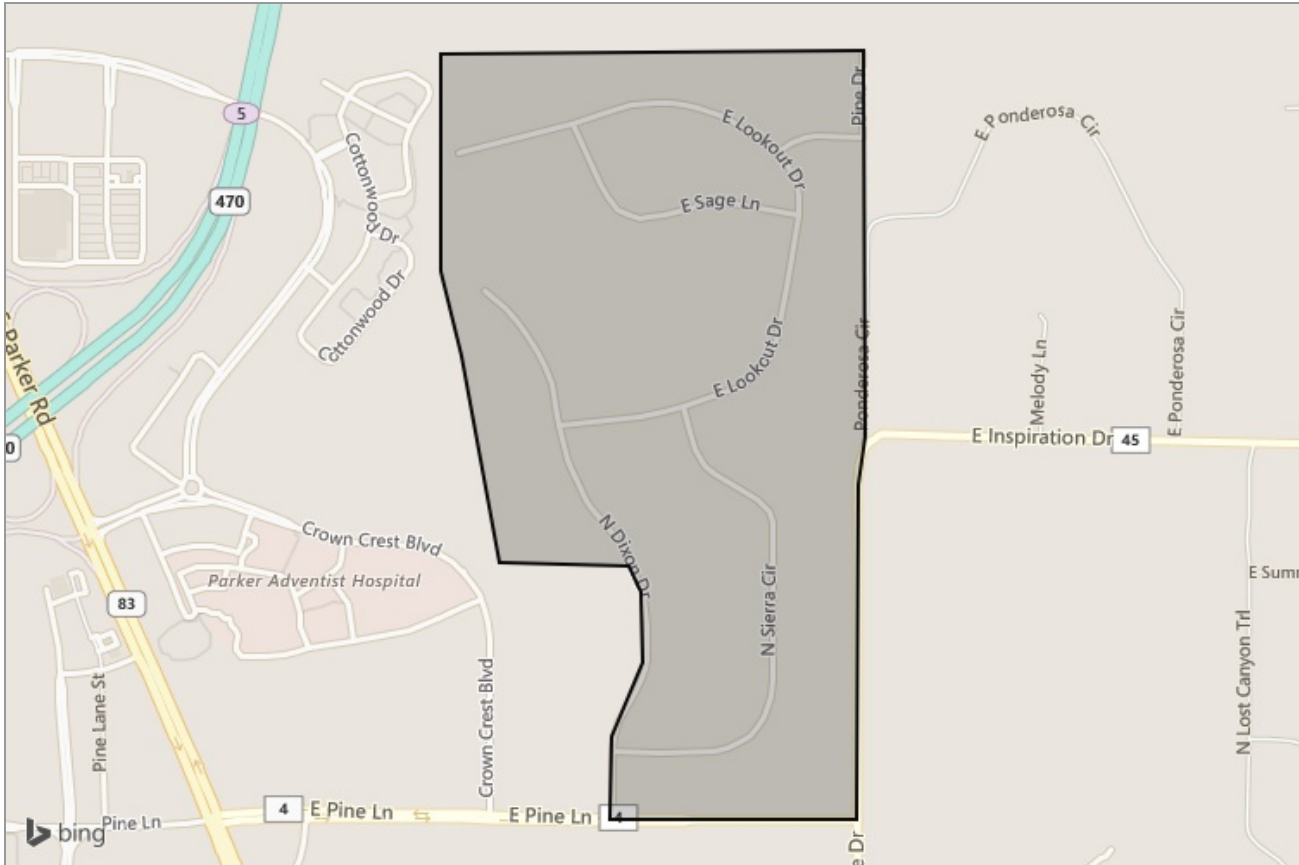


NEIGHBORHOOD REPORT

# Sierra Vista in Parker, CO



Presented by

**Caleb Block**



Mobile: (720) 260-0977 | Fax: (303) 713-9002

[calebblock1835@gmail.com](mailto:calebblock1835@gmail.com)

Cherry Creek Properties LLC  
5655 S Yosemite St, Suite 109,  
Greenwood Village, Colorado

# Neighborhood: Housing Stats and Charts

	Sierra Vista	Parker	Douglas County	Colorado	USA
Median Estimated Home Value	\$794K	\$431K	\$440K	\$333K	\$222K
Estimated Home Value 12-Month Change	+17.5%	+8%	+7.5%	+10.3%	—
Median List Price	—	\$489K	\$520K	\$349K	\$85.9K
List Price 1-Month Change	—	+0.9%	+4%	+0.9%	-2.4%
List Price 12-Month Change	—	+8.7%	+9.1%	+17.3%	+1.2%
Median Home Age	32	20	20	39	45
Own	16%	79%	79%	64%	64%
Rent	84%	21%	21%	36%	36%
\$ Value of All Buildings for which Permits Were Issued	—	—	\$221M	\$2.61B	\$102B
% Change in Permits for All Buildings	—	—	+42%	+22%	+2%
% Change in \$ Value for All Buildings	—	—	+22%	+26%	+7%

## Median Listing Price vs. Listing Volume

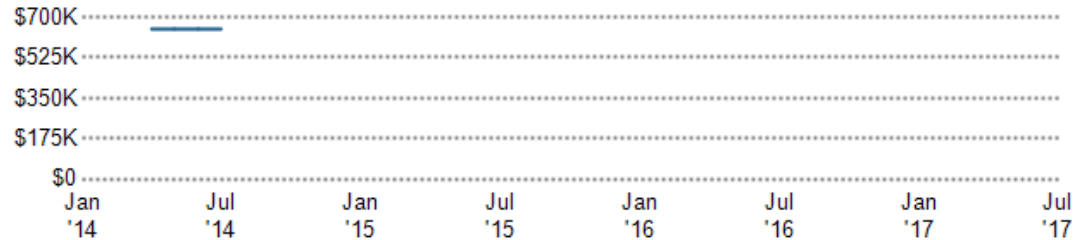
This chart compares the listing price and listing volume for homes in an area. Listing prices often follow listing volume, with a time lag, because supply can drive price movements.

Data Source: On- and off-market listings sources

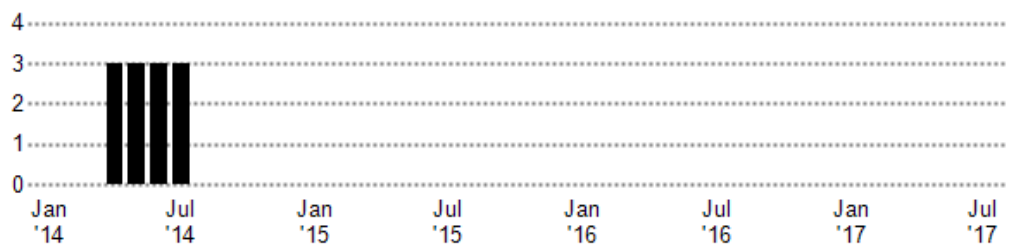
Update Frequency: Monthly

- Median List Price
- Listing Volume

Median List Price



Listing Volume



# Neighborhood: People Stats and Charts

	Sierra Vista	Parker	Douglas County	Colorado	USA
Population	1.17K	47.3K	307K	5.28M	317M
Population Density per Sq Mi	302	2.31K	365	50.9	—
Population Change since 2000	+160%	+101.3%	+74.7%	+22.7%	+12.5%
Median Age	46	34	38	36	38
Male / Female Ratio	52%	50%	50%	50%	49%
High School Graduate	8%	14%	13%	22%	28%
2-Year Degree	29%	31%	28%	31%	29%
Bachelor Degree	44%	37%	38%	24%	19%
Post-graduate Degree	16%	16%	19%	14%	11%

## Population of Children by Age Group

This chart shows the distribution of the population of children by age range — from birth to 17 — in the area of your search.

Data Source: U.S. Census

Update Frequency: Annually

■ Sierra Vista



## Population of Adults by Age Group

This chart shows the distribution of the population of adults by age range — from 18 to 75-plus — in the area of your search.

Data Source: U.S. Census

Update Frequency: Annually

■ Sierra Vista



## Households With Children

This chart shows the distribution of households with children, categorized by marital status, in the area of your search.

Data Source: U.S. Census

Update Frequency: Annually

■ Sierra Vista



## Household Income Brackets

This chart shows annual household income levels within an area.

Data Source: U.S. Census

Update Frequency: Annually

■ Sierra Vista



## Presidential Voting Pattern

This chart shows how residents of a county voted in the 2012 presidential election.

Data Source: USElectionAtlas.org

Update Frequency: Annually



# Neighborhood: Economic Stats and Charts

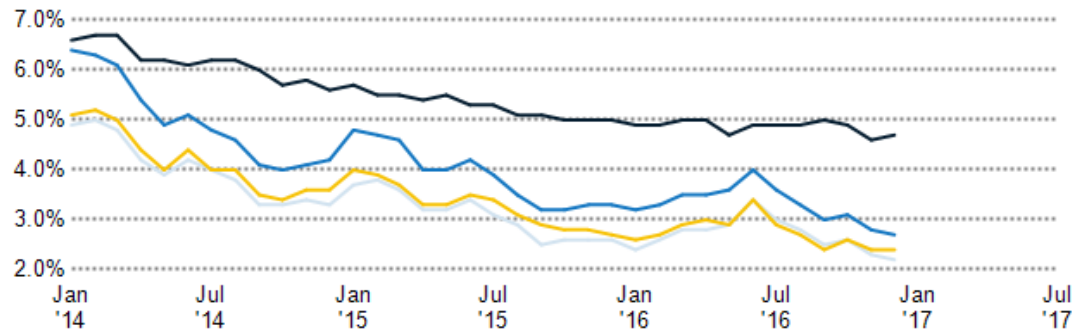
	Sierra Vista	Parker	Douglas County	Colorado	USA
Income Per Capita	\$52,028	\$38,256	\$45,500	\$32,217	\$28,930
Median Household Income	\$61,625	\$100,469	\$102,964	\$60,629	\$53,889
Unemployment Rate	–	2.4%	2.2%	2.7%	4.7%
Unemployment Number	–	689	3.92K	79.3K	7.53M
Employment Number	–	28.3K	173K	2.82M	152M
Labor Force Number	–	29K	177K	2.9M	160M

## Unemployment Rate

This chart shows the unemployment trend in the area of your search. The unemployment rate is an important driver behind the housing market.

Data Source: Bureau of Labor Statistics

Update Frequency: Monthly

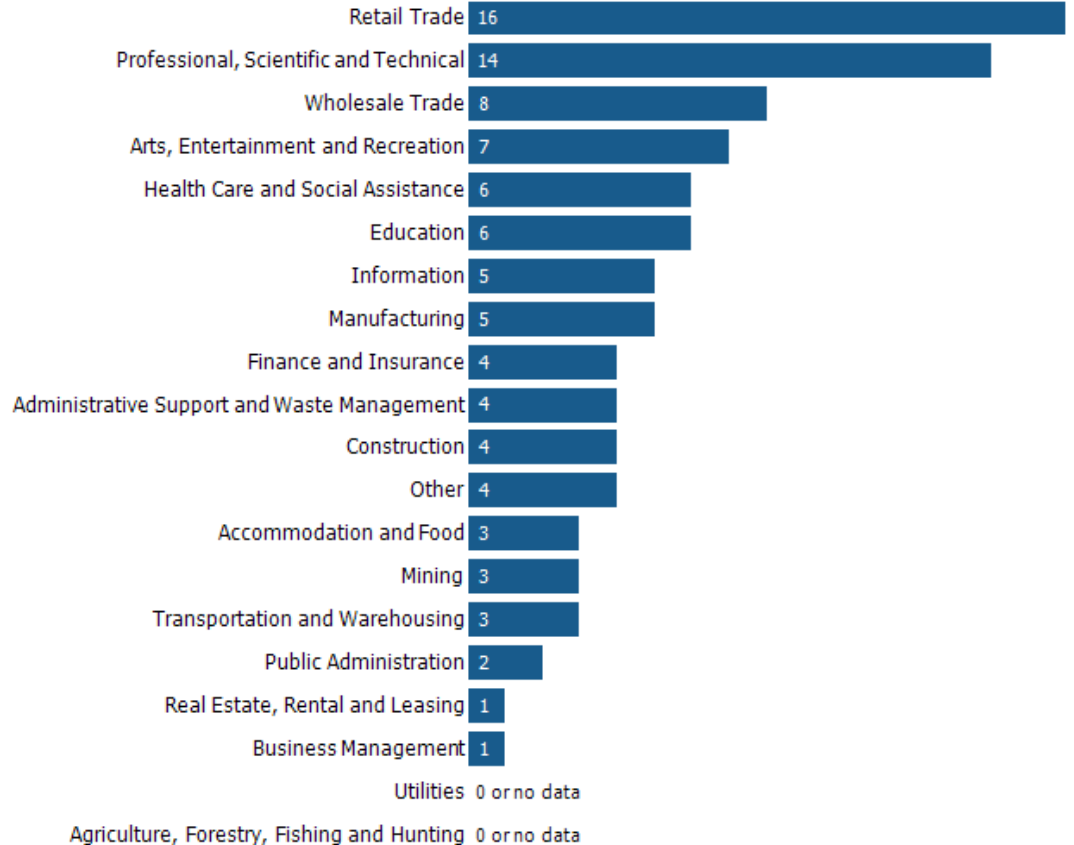


## Occupational Categories

This chart shows categories of employment within an area.

Data Source: U.S. Census

Update Frequency: Annually



# Neighborhood: Quality of Life Stats and Charts

Quality of Life in –

	Sierra Vista	Parker	Douglas County	Colorado	USA
Elevation (in feet)	4,953	5,875	6,768	6,860	–
Annual Rainfall (in inches)	16	16	17.31	18.45	–
Annual Snowfall (in inches)	60.05	60.05	68.54	51.79	–
Days of Full Sun (per year)	113	113	125	126	–
Travel Time to Work (in minutes)	27	28	28	25	26
Water Quality - Health Violations	–	–	–	–	–
Water Quality - Monitoring and Report Violations	–	–	–	–	–
Superfund Sites	0	0	0	37	2,315
Brownfield Sites	No	No	Yes	Yes	Yes

## Average Commute Time

This chart shows average commute times to work, in minutes, by percentage of an area's population.

Data Source: U.S. Census

Update Frequency: Annually



■ Sierra Vista

## How People Get to Work

This chart shows the types of transportation that residents of the area you searched use for their commute.

Data Source: U.S. Census

Update Frequency: Annually



## Walkability Scores (out of 5)

This neighborhood or ZIP code is rated for walking access to general points of interest, reflected in the overall score, plus amenities (such as retail stores) and leisure (such as restaurants and parks). Other factors considered in the scores are street types, weather, public transportation and population density.

Data Source: Maponics

Update Frequency: Quarterly

